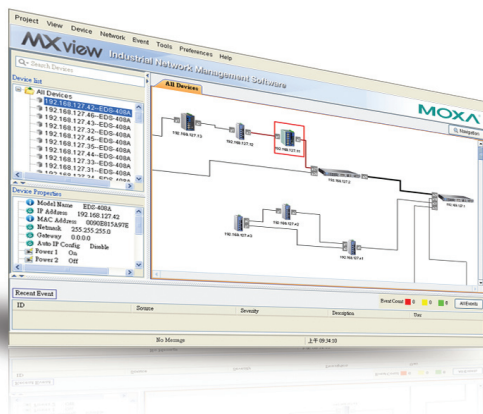


# MXview

**Industrial network management software designed for Moxa's networking solutions**



- Discovers and visualizes network devices automatically
- Monitors 500 network devices and notifies users in real time when events occur
- Provides central management of configurations and firmware for Moxa devices
- Presents historical traffic statistics and comprehensive event logs for troubleshooting
- Generates OPC tags automatically to integrate with SCADA/HMI applications\*
- Allows users to manage networks via web browser anytime
- English and Simplified Chinese user interfaces

## Introduction

Moxa's MXview network management software is designed for configuring, monitoring, and troubleshooting Moxa networking devices in industrial networks. MXview provides an integrated management platform that can discover Moxa networking devices and SNMP/IP

devices installed in subnets. All selected network components can be managed graphically via web browser from both local and remote sites—anytime and anywhere.

## Automatic Topology Discovery and Visualization

- Discovers Moxa devices and SNMP/ICMP devices within scan ranges
- Maps physical wiring automatically for LLDP devices
- Provides a tool to draw topologies manually
- Initializes the IP addresses of Moxa devices
- Visualizes trunking link, wireless link\*, and VLAN\*
- A background image can be embedded into the map for reference
- Topology map can be migrated from site to site
- Supports Unicode for internationalization

## Real-time Event Notification

- Detects problems by SNMP Inform\* or Trap in real time
- Periodical polling for comprehensive problems
- Abnormal devices and links are highlighted in maps with specified colors
- Notifies users based on events, including link down, power down, SNMP failure, bandwidth utilization, packet error rate and collision rate
- Event notification can be sent remotely via SMS and email
- Event can be alarmed locally by beep and program

## Centralized Configuration and Firmware Management

- Automatic backup of device configurations and user-selectable rollback
- Remote deployment of device configurations and firmware
- Backup of configurations to local computers

## Traffic Reports and Event Logs

- Collect statistics of bandwidth utilization, error packet rate, and collision rate
- Provides comprehensive event history for troubleshooting
- Traffic report and event log can be stored

## Integration with Other Systems

- Acts as OPC server for SCADA/HMI integration\*

\* Available in Q2, 2010

## : System Requirements

### Server Requirements

<b>CPU</b>	Intel Core 2 Duo 2.4 Ghz or higher
<b>RAM</b>	1 G or higher
<b>Hard Disk Space</b>	10 G or higher
<b>Operating System</b>	Windows XP Professional, 2000, Server 2003

### Client Requirements

<b>Browser</b>	IE 6/7/8 and Firefox 3
----------------	------------------------

## : Ordering Information

### Commercial Versions

**MXview-500:** Industrial network management software with a license for 500 nodes (by IP address)

**MXview-250:** Industrial network management software with a license for 250 nodes (by IP address)

**MXview-100:** Industrial network management software with a license for 100 nodes (by IP address)

**MXview-50:** Industrial network management software with a license for 50 nodes (by IP address)

### License Upgrade

**MXview Upgrade-50:** License expansion of MXview industrial network management software by 50 nodes (by IP address)

### Trial Version

**MXview Trial Version:** A free trial version of MXview is available for download from Moxa's website

## : Supported Devices

Model Name	Required Firmware Version
EDS-400A	2.6 or higher
EDS-500A	2.6 or higher
EDS-G509	2.6 or higher
EDS-P510	2.6 or higher
EDS-600	2.6 or higher
EDS-728	2.6 or higher
EDS-828	2.6 or higher
IKS-6726	2.6 or higher
PT-7710	1.2 or higher
PT-7728	2.6 or higher
PT-7828	2.6 or higher
PT-G7509	1.1 or higher
TN-5508/5510	1.1 or higher
TN-5516/5518	1.2 or higher
AWK-3000*	1.4 or higher
AWK-4000*	1.4 or higher

\* Available in Q2, 2010

Note: Additional model names will be added in the near future. Please check Moxa's website for the most up-to-date information.